

A vertical photograph of a golf course. In the foreground, a golfer is on a green, bent over to hit a ball. A red tee marker is visible on the grass. The middle ground features a tall, slender cypress tree and other trees with autumn foliage. The background shows a range of mountains with snow-capped peaks under a cloudy sky.

**DUCA DEL COSMA**  
ITALIAN GOLF EVOLUTION

**COOL SEASON 2021**



## DUCA DEL COSMA SIGNS DUTCH GOLFER, SIX TIME EUROPEAN TOUR WINNER JOOST LUITEN



Italian golf fashion brand Duca del Cosma signed Dutch European Tour star Joost Luiten to wear its hand-crafted leather shoes in a multi-year deal from 1st January 2021.

“The signing of Joost is a major statement by the Duca del Cosma brand and will give all our stockists a boost as they present this year’s exciting ranges to their customers,” said Frank van Wezel.

“Having one of the world’s top-ranked players wear our latest models will make a significant difference to the brand’s profile – not just in Holland and across Europe, but in all 30 countries where Duca del Cosma shoes are sold worldwide,” he added.

The first Dutch player to win his national Open title twice (2011 & 2013), Luiten will be playing in the latest waterproof soft spike shoes and sneaker-style spikeless models this coming season.

All the premium shoes in the Duca del Cosma golf range are designed exclusively in Italy by Creative Director Baldovino Mattiazzo – creator of the first spikeless golf shoe in 2006 – and manufactured in Portugal.

“I’m very proud to be wearing attractive and comfortable Duca del Cosma shoes that are designed and made to such a high standard in Europe,” said Joost, who qualified for the European Tour’s season ending DP World Tour Championship in Dubai.

“The brand’s connection with The Netherlands makes it even more special for me and I can’t wait to promote these distinctive shoes on Tour - both on and off the golf course,” he added.

The 34-year-old will be hoping for a hat-trick of KLM Open wins in September 2021 when competing at the Bernardus golf course. The Duca del Cosma brand has been a high-profile sponsor of the KLM Open since 2018 and will once again provide footwear to hundreds of volunteers and officials at one of the most popular events on the European Tour.

In total, Luiten has eight tournament wins since turning professional at +5 in 2006 and won more than 12m in prize money. His victories have come in France, Austria, Malaysia, Wales and Oman, where he won his last title in 2018 at the inaugural NBO Oman Open. He represented The Netherlands at the 2016 Olympics and in three World Cup contests.

## History & Philosophy

Since being founded in Europe two decades ago, Duca del Cosma has revolutionized the world of golf fashion with its contemporary range of shoes for modern golfers.

The premium brand combines stylish Italian design with top-quality materials and expert-hand-crafting skills to produce extremely comfortable shoes that look sensational - both on and off the golf course.

Attention to detail is the key. Only leather from the best tanneries in Europe is used to create shoes that also feature the latest cutting-edge technology, in the form of specialized footbed inserts from Arneflex® providing outstanding comfort during every round of golf. Even the laces are made from first-class waxed cotton and styles with two lace options enable owners to color-match with various outfits.

The award-winning brand was the first to introduce a spikeless golf shoe. Duca continues to push the boundaries for fashionable innovation with around 150 styles and sells across more than 30 countries around the world.

Its philosophy revolves around creating something completely different in the game of golf. That’s why it offers lines of both technical golf shoes and lifestyle sneakers that can be worn for sports, leisure and even business occasions.

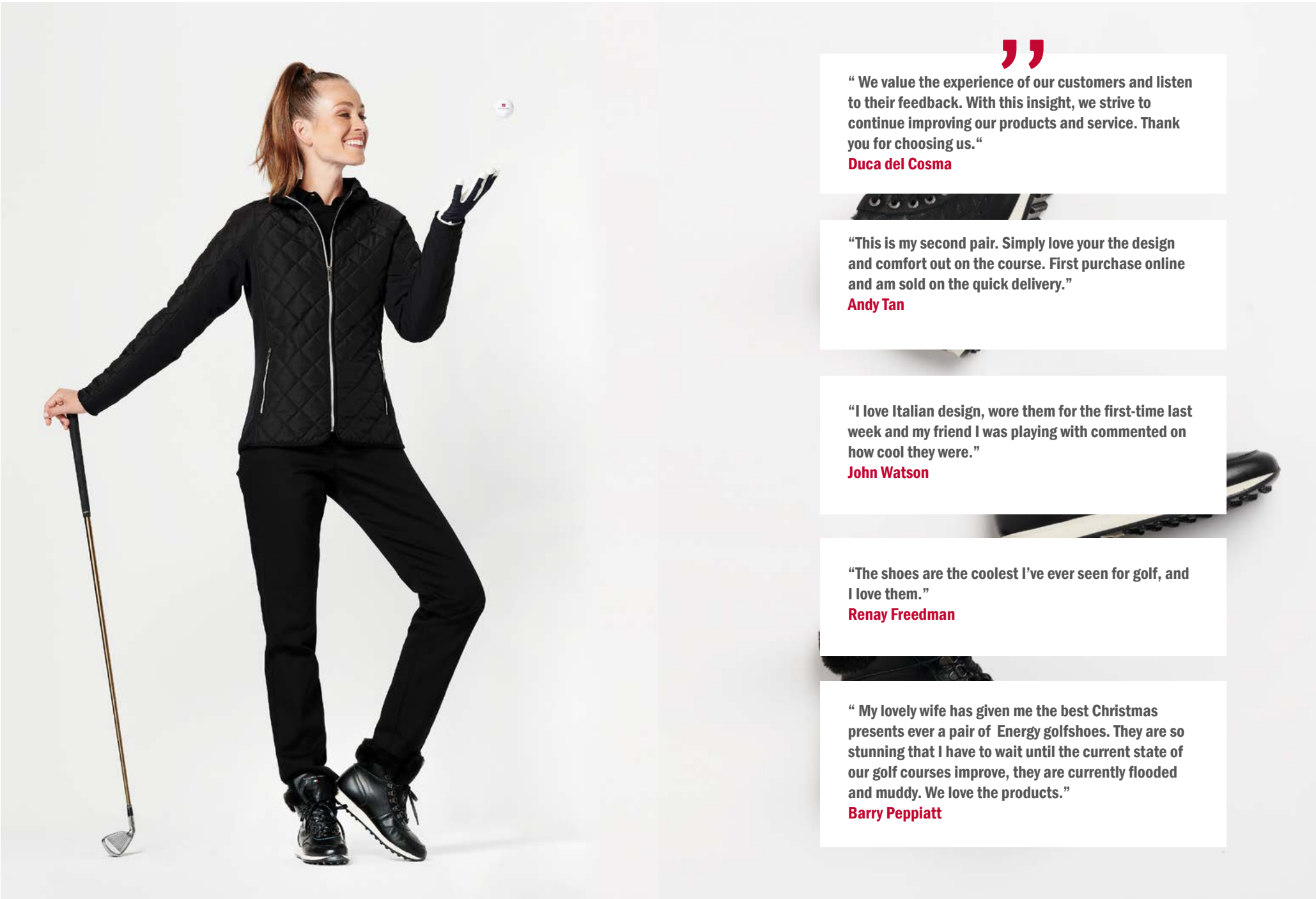
Duca del Cosma always looks to be at the forefront of global fashion trends and technology that can add value to its luxury products.

Renowned sports shoe innovator Frank van Wezel, who founded and developed the highly successful international HI-TEC brand, now owns Duca del Cosma with his wife Caroline and runs the operation from the head office in The Netherlands, his native country. As company Chairman, his personal email address is printed inside every shoebox, so customers can give him feedback and be sure it will be studied and followed up by the man at the top.

It’s this personal touch and customer focus that helps to define the brand.

Duca del Cosma – Italian Golf Evolution!





“ We value the experience of our customers and listen to their feedback. With this insight, we strive to continue improving our products and service. Thank you for choosing us.”  
**Duca del Cosma**

“This is my second pair. Simply love your the design and comfort out on the course. First purchase online and am sold on the quick delivery.”  
**Andy Tan**

“I love Italian design, wore them for the first-time last week and my friend I was playing with commented on how cool they were.”  
**John Watson**

“The shoes are the coolest I've ever seen for golf, and I love them.”  
**Renay Freedman**

“ My lovely wife has given me the best Christmas presents ever a pair of Energy golfshoes. They are so stunning that I have to wait until the current state of our golf courses improve, they are currently flooded and muddy. We love the products.”  
**Barry Peppiatt**

# *Women's Collection*





### SIREN 121026-109

BLACK

[2nd lace color: yellow]

- Soft Italian Nappa leather
- Polyester laces for a sportive look and feel
- Waterproof Sock System with OnSteam® recyclable microfiber
- Duca Cor Linza MTP 2.5mm Aqua stop lining
- Comfortable and breathable ARNEFLEX® insert sole, memory foam covered with OnSteam® recyclable microfiber and heel support with recycled cork
- Airplay XII recyclable lightweight Eco rubber outsole, DF4



Sizes EU 36 - 42 / UK 3 - 9 / US 6 - 10

#### COMMENTS:



### KUBANA 110191-22

NAVY/SILVER

[2nd lace color: white]

- Soft Italian Nappa leather, patent leather
- Polyester laces for luxurious look and feel
- Waterproof Sock System with breathable membrane
- Comfortable and breathable ARNEFLEX® insert sole, memory foam covered with cow leather and heel support with recycled cork
- Airplay III outsole in high quality TR, DF1



Sizes EU 36 - 42 / UK 3 - 9 / US 6 - 10

#### COMMENTS:



**AIRPLAY XII**

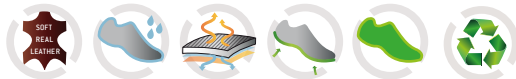


**AIRPLAY III**



**KING CHEETAH 120500-109**

- Soft Italian Nappa suede, patent microfiber, animal print
- Polyester laces for a sportive look and feel
- Waterproof Sock System with On Steam recyclable microfiber
- Duca Cor Linza MTP 2.5mm Aqua stop lining
- Comfortable and breathable ARNEFLEX® insert sole, memory foam covered with cow leather and heel support with recycled cork
- Airplay VII outsole in TR with gold “stars” in the nubs, DF5



Sizes EU 36 - 42 / UK 3 - 9 / US 6 - 10

**AIRPLAY VII**



**LORENZA 121500-109  
BLACK**

- Soft Nappa leather, patent recyclable microfiber
- Polyester laces for luxurious look and feel
- Waterproof Sock System with On Steam recyclable microfiber
- Warm, high quality polyester fur lining
- Duca Cor Linza MTP 2.5mm Aqua stop lining
- Comfortable and breathable ARNEFLEX® insert sole, memory foam covered with OnSteam® recyclable microfiber and heel support with recycled cork
- Airplay IX outsole in TR, DF4



Sizes EU 36 - 42 / UK 3 - 9 / US 6 - 10



BROWN 121501-118



NAVY 121504-122



**AIRPLAY IX**

**KING CHEETAH**

Only 50 King Cheetahs are left in the world. We support the Hoedspruit Endangered Species Centre (HESC) in South Africa with the adoption of a King Cheetah cub. We raise awareness and funds for HESC and their breeding program by selling this special edition shoe. The outsole resembles the paw of the King Cheetah and creates extra stability and grip.

**COMMENTS:**



TWEED 215392-04  
(2nd lace color: light grey)



COGNAC 215292-16  
(2nd lace color: dark brown)

**LASCALA 215392-42  
CHECK**

(2nd lace color:red)

- Soft Italian Nappa leather
- Wax laces for luxurious look and feel
- Heel upper part in soft synthetic fur
- Warm, high quality polyester lining
- Waterproof Sock System with breathable membrane
- Duca Cor Linza MTP 2.5mm Aqua stop lining
- Comfortable and breathable ARNEFLEX® insert sole, memory foam covered with cow leather and heel support by recycled cork
- Airplay VI outsole in TR and light TR, DF6

**PALAZZO 215292-09  
BLACK**

(2nd lace color: light grey)

- Soft Italian Nappa leather
- Wax laces for luxurious look and feel
- Heel upper part in soft synthetic fur
- Warm, high quality polyester lining
- Waterproof Sock System with breathable membrane
- Duca Cor Linza MTP 2.5mm Aqua stop lining
- Comfortable and breathable ARNEFLEX® insert sole, memory foam covered with cow leather
- Airplay VI outsole in TR and light TR, DF6



Sizes EU 36 - 42 / UK 3 - 9 / US 6 - 10

Sizes EU 36 - 42 / UK 3 - 9 / US 6 - 10

**AIRPLAY VI**

**AIRPLAY VI**

**COMMENTS:**

[Empty dashed box for comments]

**COMMENTS:**

[Empty dashed box for comments]



DARK BROWN 215472-19

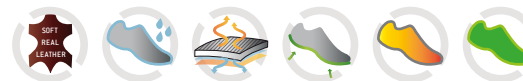
COGNAC 215372-16

**PALOMA 215582-09**  
BLACK / WHITE

- Soft Italian Nappa leather, cow leather embossed pattern
- Wax laces for luxurious look and feel
- Heel upper part in neoprene material
- Warm, high quality polyester fur lining
- Waterproof Sock System with breathable membrane
- Duca Cor Linza MTP 2.5mm Aqua stop lining
- Comfortable and breathable ARNEFLEX® insert sole, memory foam covered with cow leather
- Airplay VI outsole in TR and light TR, DFG

**PRADO 215482-09**  
BLACK

- Soft Italian Nappa leather, cow leather
- Wax laces for luxurious look and feel
- Heel upper part in neoprene material
- Warm, high quality polyester fur lining
- Waterproof Sock System with breathable membrane
- Duca Cor Linza MTP 2.5mm Aqua stop lining
- Comfortable and breathable ARNEFLEX® insert sole, memory foam covered with cow leather
- Airplay VI outsole in TR and light TR, DFG



Sizes EU 36 - 42 / UK 3 - 9 / US 6 - 10

Sizes EU 36 - 42 / UK 3 - 9 / US 6 - 10

**AIRPLAY VI**

**AIRPLAY VI**

**COMMENTS:**

[Empty dashed box for comments]

**COMMENTS:**

[Empty dashed box for comments]





# *Men's Collection*



**BELAIR 125392-09**

**BLACK**

[2nd lace color: black]

- Soft Italian Nappa leather
- Wax laces for luxurious look and feel
- Waterproof Sock System with breathable membrane
- Duca Cor Linza MTP 2.5mm Aqua stop lining
- Comfortable and breathable ARNEFLEX® insert sole, memory foam covered with cow leather and heel support with recycled cork
- Airplay VI outsole in TR and light TR, DF6



Sizes EU 40 - 46 / Uk 6 - 12 / US 7 - 13

**COMMENTS:**

[Empty comment box for BELAIR sneaker]



**VALDERAMA 121258-109**

**BLACK**

[2nd lace color: white]

- Soft Italian Nappa leather
- Polyester laces for a sportive look and feel
- Waterproof Sock System with OnSteam® recyclable microfiber
- Duca Cor Linza MTP 2.5mm Aqua stop lining
- Comfortable and breathable ARNEFLEX® insert sole, memory foam covered with OnSteam® recyclable microfiber and heel support with recycled cork
- Airplay IV outsole in recyclable TPU, DF1



Sizes EU 40 - 47 / Uk 6 - 13 / US 7 - 14

**COMMENTS:**

[Empty comment box for VALDERAMA sneaker]

**AIRPLAY VI**

**AIRPLAY IV**



BROWN 121751-117



BLACK 265592-09

**DELAGO 121750-109  
BLACK**

- Soft Italian Nappa leather, tumbled leather, recyclable microfiber
- Wax laces for luxurious look and feel
- Waterproof Sock System with breathable membrane
- Warm, high quality polyester fur lining
- Lakewood: No fur lining
- Duca Cor Linza MTP 2.5mm Aqua stop lining
- Comfortable and breathable ARNEFLEX® insert sole, memory foam covered with
- OnSteam® recyclable microfiber and heel support with recycled cork
- Airplay XI outsole in high quality TR, DF6

**STANFORD 265592-18  
COFFEE**

- Soft cow nubuck, embossed leather pattern on heel
- Bicolor round polyester laces for playful look and feel
- Waterproof Sock System with breathable membrane
- Duca Cor Linza MTP 2.5mm Aqua stop lining
- Comfortable and breathable ARNEFLEX® insert sole, memory foam covered with cow leather and heel support with recycled cork
- Airplay IX outsole in TR, DF4



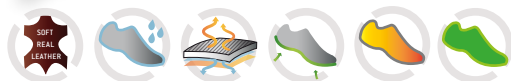
LAKEWOOD OLIVE 225292-31



**AIRPLAY IX**



**AIRPLAY IX**



Sizes EU 40 - 47 / Uk 6 - 13 / US 7 - 14



Sizes EU 40 - 47 / UK 6 - 13 / US 7 - 14

**COMMENTS:**

[Empty dashed box for comments]

**COMMENTS:**

[Empty dashed box for comments]

### AIRPLAY III OUTSOLE

- Original Classic DDC sole
- TPU with highest abrasion resistance
- Lightweight TPU function sole designed with a comfort last to guarantee flexible wearing comfort
- Lateral stabilizers and 5mm cone-shaped nubs to provide traction and stability
- Heightened heel guaranteeing perfect stance
- Duca last for this sole unit: DF1



### AIRPLAY VI OUTSOLE

- Fashionable design with trendsetting qualities
- TR functional sole combines function and fit perfect for on and off the course
- 5mm cone-shaped nubs across complete outsole generates progressive stability during swing to ensure optimal grip
- Lightweight TR and cushioning across sole area
- Integrated bumper (front) protection
- Heightened heel guaranteeing perfect stance
- Duca last for this sole unit: DF6



### AIRPLAY VII OUTSOLE

- DDC outsole for the fashion-conscious golfer
- First golf sole ever with silver/gold “stars” in the nubs
- TR function sole designed with a comfort last to guarantee flexible wearing comfort
- Integrated bumper (front) protection
- High quality TR
- Duca last for this sole unit: DF5



### AIRPLAY XI OUTSOLE

- Fashionable design with trendsetting qualities
- TR functional spikeless sole combines function and fit - perfect for on and off the course
- 5mm square-shaped nubs across complete outsole generates progressive stability during swing to ensure optimal grip
- Lightweight and cushioning across sole area
- Heightened heel guaranteeing perfect stance
- Leather welt decoration - outsole
- Shank intergrated in sole for better support
- Duca last for this sole unit: DF6



### AIRPLAY IX OUTSOLE

- Fashionable design with trendsetting qualities
- TR functional sole combines function and fit perfect for on and off the course
- 5mm cone-shaped nubs across complete outsole generates progressive stability during swing to ensure optimal grip
- Lightweight and cushioning across sole area
- Integrated bumper (front) protection
- Heightened heel guaranteeing perfect stance
- Duca last for this sole unit: DF4



### DUCA FITTING SYSTEM

- DF1 – middle
- DF3 – middle
- DF4 – middle
- DF5 – middle
- DF6 – middle / wide
- DF8 – wide
- DF10 – middle / wide

## AIRPLAY XII OUTSOLE (ECO GREEN)



- Innovative engineered high tech spikeless outsole
- Eco Green – a commitment to sustainability
- Recyclable B-Light Rubber Outsole technology created for on and off the course
- 2-Way-Twist triangle nubs positioned on the pivot point conically & cube-shaped nubs ensure optimal grip, traction and stability
- Bi-Color outsole composition
- Heightened heel guaranteeing perfect stance
- Duca last for this sole unit: DF4



## AIRPLAY IV OUTSOLE (ECO GREEN)



- Latest innovative spikeless outsole development
- Eco Green – a commitment to sustainability
- Recyclable TPU spikeless outsole combines function and fit perfect for on and off the course
- Lightweight outsole with integrated EVA cushioning system
- Bi-Color outsole composition
- Functional shaped nubs across complete outsole generate progressive stability during the swing to ensure optimal grip
- Heightened heel guaranteeing perfect stance
- Based on comfort Last – by Fioretti to promise an excellent fit
- Duca last for this sole unit: DF1

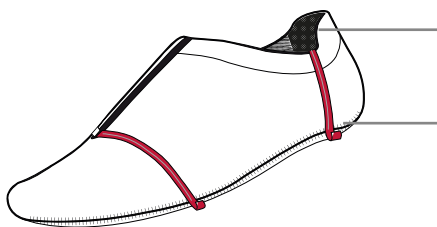




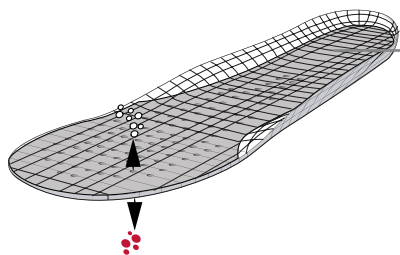
## PRODUCT TECHNOLOGY SHOES



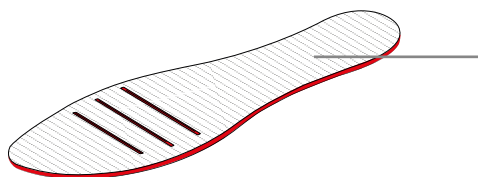
- Special comfort last
- Elegant, soft and functional lining
- Soft nappa Leather and other high quality materials



- Waterproof and breathable membrane system  
Duca Cor Linza MTP 2.5mm Aquastop lining  
Waterproof sock system
- Seam taping

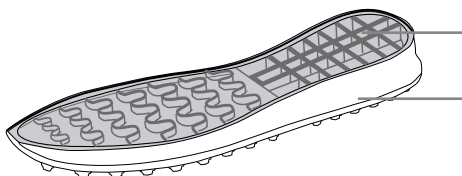


- ARNEFLEX® high density lightweight foam Insert sole:
- 100% Recyclable, breathable and anti-bacterial  
Ergonomic, comfortable and removeable,  
long-lasting comfort, breathability, and shock  
absorption. Made from recycled rubber, covered  
with OnSteam® recyclable microfiber



- High quality insole

TR functional outsole combines function and fit -  
perfect for on and off the course



- Lightweight and cushioning across sole area

5mm cone-shaped nubs across complete outsole  
generates progressive stability during swing to ensure  
optimal grip

## INSERT SOLE TECHNOLOGY

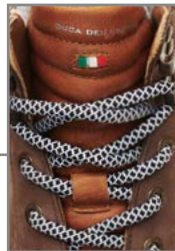




**Breathable**  
Waterproof leather and Duca Cor Linza MTP 2.5mm Aqua stop lining with taped seams, waterproof sock system for best comfort



**Italian Design**  
Handcrafted, fashionable design for golfers perfect on and off the course



**Real Leather**  
Soft nappa leather



**Recyclable and recycled materials**



**ARNEFLEX®**  
Removable Insert sole: breathable, comfortable, anti-bacterial, high density lightweight foam made from recycled rubber



**Keep Warm System**  
Thermal lining



**Microfiber leather**  
Breathable, water resistant, high color retention and fully recyclable



**Airplay IX Outsole**  
Lightweight TPU functional sole combines function and fit perfect for on and off the course



**Comfort Last**  
Excellent function and fit

**DUCA DEL COSMA HEAD OFFICE**

Duca del Cosma B.V.  
De Corridor 27  
3621 ZA Breukelen  
The Netherlands  
Tel. + 31 (0) 85 250 00 10  
info@ducadelcosma.com  
www.ducadelcosma.com

**DUCA DEL COSMA USA**

Duca Del Cosma LLC  
Crystal Cove Commons, Suite 415  
1201 US Highway 1  
North Palm Beach  
Florida 33408 USA  
Tel. + 1 888 202 6066  
info@ducadelcosma.com  
www.ducadelcosma.us

**DUCA DEL COSMA UNITED KINGDOM AND IRELAND**

Duca del Cosma Ltd  
Duca House  
43 Progress Road  
Leigh-on-Sea  
Essex SS9 5PR  
United Kingdom  
Tel: + 44 (0) 800 193 3822  
enquiries@ducadelcosma.co.uk  
www.ducadelcosma.co.uk

**DUCA DEL COSMA SOUTH AFRICA**

Duca del Cosma PTY  
40 Gold Street, Northgate Estate  
Brooklyn  
7435 Cape Town  
South Africa  
Tel: + 27 (21) 506 6900  
info@ducadelcosma.co.za  
www.ducadelcosma.co.za

**DUCA DEL COSMA DISTRIBUTED IN:**

Austria, Belgium, Bulgaria, Canada, China, Czech Republic, Denmark, Estonia, Finland, France, Germany, Greece, Hong Kong, Iceland, Ireland, Italy, Japan, Kenya, Latvia, Lithuania, Malaysia, Mauritius, Namibia, New Zealand, Norway, Poland, Portugal, Russia, Singapore, South Africa, South Korea, Spain, Sweden, Switzerland, The Netherlands, United Kingdom, USA, Vietnam



© 2021 Duca del Cosma



E & OE. Features subject to change. Illustrations and features described may differ from actual models. Actual colors may differ from print colours.





[WWW.DUCADELCO.SMA.COM](http://WWW.DUCADELCO.SMA.COM)