



DUCA DEL COSMA

ITALIAN GOLF EVOLUTION



WORKBOOK



History & Philosophy

Since being founded in Europe two decades ago, Duca del Cosma has revolutionized the world of golf fashion with its contemporary range of shoes for modern golfers.

The premium brand combines stylish Italian design with top-quality materials and expert hand-crafting skills to produce extremely comfortable shoes that look sensational - both on and off the golf course.

Attention to detail is the key. Only leather from the best tanneries in Europe is used to create shoes that also feature the latest cutting-edge technology, in the form of specialized footbed inserts from Arneflex® providing outstanding comfort during every round of golf. Even the laces are made from first-class waxed cotton and styles with two lace options enable owners to color-match with various outfits.

The award-winning brand was the first to introduce a spikeless golf shoe. Duca continues to push the boundaries for fashionable innovation with around 150 styles and sells across more than 30 countries around the world.

Its philosophy revolves around creating something completely different in the game of golf. That's why it offers lines of both technical golf shoes and lifestyle sneakers that can be worn for sports, leisure and even business occasions.

Duca del Cosma always looks to be at the forefront of global fashion trends and technology that can add value to its luxury products.

Renowned sports shoe innovator Frank van Wezel, who founded and developed the highly successful international HI-TEC brand, now owns Duca del Cosma and runs the operation from the head office in The Netherlands, his native country. As company Chairman, his personal email address is printed inside every shoebox, so customers can give him feedback and be sure it will be studied and followed up by the man at the top.

It's this personal touch and customer focus that helps to define the brand.

Duca del Cosma – Italian Golf Evolution!

Frank van Wezel, chairman.



Mens Collection





GREY 121252-103
[2nd lace color: white]



NAVY 121277-122
[2nd lace color: navy]

KINGSCUP 121250-100

WHITE

[2nd lace color: navy]

- Soft recyclable microfiber
- Polyester laces for a sportive look and feel
- Waterproof Sock System with On Steam recyclable microfiber
- Duca Cor Linza MTP 2.5mm Aqua stop lining
- Comfortable and breathable ARNEFLEX® insert sole, memory foam covered with On Steam recyclable microfiber and heel support with recycled cork
- Airplay III outsole in high quality TPU, DF1



NAVY 121251-122
[2nd lace color: white]

KUBA 2.0 121276-100

WHITE/GREEN/RED

[2nd lace color: red]

- Soft Italian Nappa leather
- Wax laces for luxurious look and feel
- Waterproof Sock System with On Steam recyclable microfiber
- Duca Cor Linza MTP 2.5mm Aqua stop lining
- Comfortable and breathable ARNEFLEX® insert sole, memory foam covered with On Steam recyclable microfiber and heel support with recycled cork
- Airplay IV outsole in recyclable TPU, DF1



Sizes EU 40 - 47 / Uk 6 - 13 / US 7 - 14

Sizes EU 40 - 47 / Uk 6 - 13 / US 7 - 14

AIRPLAY III

AIRPLAY IV

COMMENTS:

[Empty dashed box for comments]

COMMENTS:

[Empty dashed box for comments]



NAVY 121255-122
(2nd lace color: navy)



BLACK 121258-109
(2nd lace color: white)

KUBANEO 121254-100

WHITE

(2nd lace color: white)

- Soft Italian Nappa leather
- Polyester laces for a sportive look and feel
- Waterproof Sock System with On Steam recyclable microfiber
- Duca Cor Linza MTP 2.5mm Aqua stop lining
- Comfortable and breathable ARNEFLEX® insert sole, memory foam covered with On Steam recyclable microfiber and heel support with recycled cork
- Airplay IV outsole in recyclable TPU, DF1



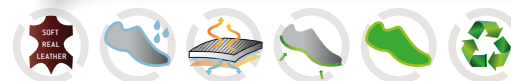
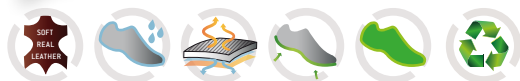
MULTI 121256-100
(2nd lace color: green)

VALDERAMA 121257-100

WHITE

(2nd lace color: cognac)

- Soft Italian Nappa leather
- Polyester laces for a sportive look and feel
- Waterproof Sock System with On Steam recyclable microfiber
- Duca Cor Linza MTP 2.5mm Aqua stop lining
- Comfortable and breathable ARNEFLEX® insert sole, memory foam covered with On Steam recyclable microfiber and heel support with recycled cork
- Airplay IV outsole in recyclable TPU, DF1



Sizes EU 40 - 47 / Uk 6 - 13 / US 7 - 14

Sizes EU 40 - 47 / Uk 6 - 13 / US 7 - 14

AIRPLAY IV

AIRPLAY IV

COMMENTS:

[Empty dashed box for comments]

COMMENTS:

[Empty dashed box for comments]



BELAIR 120701-16

WHITE/COGNAC

[2nd lace color: blue]

- Soft Italian Nappa leather
- Wax laces for luxurious look and feel
- Waterproof Sock System with breathable membrane
- Duca Cor Linza MTP 2.5mm Aqua stop lining
- Comfortable and breathable ARNEFLEX® insert sole, memory foam covered with cow leather and heel support with recycled cork
- Airplay VI outsole in TR and light TR, DF6



Sizes EU 40 - 47 / Uk 6 - 13 / US 7 - 14



WHITE/ORANGE 120891-00

[2nd lace color: navy]



BLUE 120891-21

[2nd lace color: navy]



AIRPLAY VI



TOMCAT 121275-622

NAVY

[2nd lace color: navy]

- Soft recyclable Microfiber
- Polyester laces for a sportive look and feel
- Waterproof Sock System with On Steam recyclable microfiber
- Duca Cor Linza MTP 2.5mm Aqua stop lining
- Comfortable and breathable ARNEFLEX® insert sole, memory foam covered with On Steam recyclable microfiber and heel support with recycled cork
- Airplay XII recyclable light weight Eco rubber



Sizes EU 40 - 47 / Uk 6 - 13 / US 7 - 14



OLIVE 121274-631

[2nd lace color: yellow]



BLACK 121273-609

[2nd lace color: red]



AIRPLAY XII

COMMENTS:

Empty dashed box for comments.

COMMENTS:

Empty dashed box for comments.



FLYER 120801-22
NAVY/KOBALT

- Soft Italian nubuck leather
- Polyester laces for sportive look and feel
- Waterproof Sock System with breathable membrane
- Duca Cor Linza MTP 2.5mm Aqua stop lining
- Comfortable and breathable ARNEFLEX® insert sole, memory foam covered with cow leather and heel support with recycled cork
- Airplay IX outsole in TR, DF4



Sizes EU 40 - 47 / Uk 6 - 13 / US 7 - 14



AIRPLAY IX

COMMENTS:

[Empty dashed box for comments]



NAVY 121267-122
[2nd lace color: cognac]

ELPASO 121268-100
WHITE
[2nd lace color: cognac]

ELDORADO 125492-00
WHITE
[2nd lace color: white]

COGNAC 121201-16
[2nd lace color: light blue]



BLACK 125492-09
[2nd lace color: red]

- Soft Italian Nappa leather
- Polyester laces for a sportive look and feel
- Waterproof Sock System with On Steam recyclable microfiber
- Duca Cor Linza MTP 2.5mm Aqua stop lining
- Comfortable and breathable ARNEFLEX® insert sole, memory foam covered with On Steam recyclable microfiber and heel support with recycled cork
- Airplay XI outsole in high quality TR, DF6

- Soft Italian Nappa leather
- Wax laces for luxurious look and feel
- Waterproof Sock System with breathable membrane
- Duca Cor Linza MTP 2.5mm Aqua stop lining
- Comfortable and breathable ARNEFLEX® insert sole, memory foam covered with cow leather and heel support with recycled cork
- Airplay XI outsole in high quality TR, DF6



Sizes EU 40 - 47 / Uk 6 - 13 / US 7 - 14



AIRPLAY XI



Sizes EU 40 - 47 / Uk 6 - 13 / US 7 - 14



AIRPLAY XI

COMMENTS:

[Empty dashed box for comments]

COMMENTS:

[Empty dashed box for comments]



MONTEROSSO 161491-00

WHITE

[2nd lace color: navy]

- Soft Italian Nappa leather, foxing suede
- Wax laces for luxurious look and feel
- Soft cow leather lining
- Comfortable and breathable ARNEFLEX® insert sole, memory foam covered with cow leather
- Elegant comfort last
- Strobel construction
- Airplay I in high quality TR, DF8



Sizes EU 40 - 47 / Uk 6 - 14 / US 7 - 15



NAVY 161491-22
[2nd lace color: navy]



BLACK 165992-09
[2nd lace color: black]



AIRPLAY I



MONTEROSSO 161491-10

ECRU

[2nd lace color: ecru]

- Soft Italian Nappa leather, foxing suede
- Wax laces for luxurious look and feel
- Soft cow leather lining
- Comfortable and breathable ARNEFLEX® insert sole, memory foam covered with cow leather
- Elegant comfort last
- Strobel construction
- Airplay I in high quality TR, DF8



Sizes EU 40 - 47 / Uk 6 - 14 / US 7 - 15



COGNAC 161491-16
[2nd lace color: brown]



AIRPLAY I

COMMENTS:

[Empty dashed box for comments]

COMMENTS:

[Empty dashed box for comments]

Womens Collection





RED 121002-142
[2nd lace color: red]



WHITE/GREEN/RED 120191-31
[2nd lace color: red]

QUEENSCUP 121001-100

WHITE

[2nd lace color: pink fluo]

- Soft recyclable microfiber
- Polyester laces for a sportive look and feel
- Waterproof Sock System with On Steam recyclable microfiber
- Duca Cor Linza MTP 2.5mm Aqua stop lining
- Comfortable and breathable ARNEFLEX® insert sole, memory foam covered with On Steam recyclable microfiber and heel support with recycled cork
- Airplay III outsole in high quality TPU, DF1

KUBANA 110101-61

SILVER/ZEBRA

[2nd lace color: black]

- 110191-61: Cow leather, silver leather, neo-prene animal print
- Nappa leather, patent leather
- Polyester laces for luxurious look and feel
- Waterproof Sock System with breathable membrane
- Comfortable and breathable ARNEFLEX® insert sole, memory foam covered with cow leather and heel support with recycled cork
- Airplay III outsole in light quality TR, DF1



WHITE/WHITE 110101-00
[2nd lace color: silver]



NAVY/SILVER 110191-22
[2nd lace color: white]



Sizes EU 36 - 42 / Uk 3 - 9 / US 6 - 10

AIRPLAY III

Sizes EU 36 - 42 / Uk 3 - 9 / US 6 - 10

AIRPLAY III

COMMENTS:

[Empty comment box]

COMMENTS:

[Empty comment box]



SIREN 121027-100

WHITE

[2nd lace color: black]

- Soft Italian Nappa leather
- Polyester laces for a sportive look and feel
- Waterproof Sock System with On Steam recyclable microfiber
- Duca Cor Linza MTP 2.5mm Aqua stop lining
- Comfortable and breathable ARNEFLEX® insert sole, memory foam covered with On Steam recyclable microfiber and heel support with recycled cork
- Airplay XII recyclable light weight Eco rubber outsole, DF4



Sizes EU 36 - 42 / Uk 3 - 9 / US 6 - 10



BLACK 121026-109
[2nd lace color: yellow]



WILDCAT 121024-603

LT GREY

[2nd lace color: white]

- Soft recyclable microfiber
- Polyester laces for a sportive look and feel
- Waterproof Sock System with On Steam recyclable microfiber
- Duca Cor Linza MTP 2.5mm Aqua stop lining
- Comfortable and breathable ARNEFLEX® insert sole, memory foam covered with On Steam recyclable microfiber and heel support with recycled cork
- Airplay XII recyclable light weight Eco rubber outsole, DF4



Sizes EU 36 - 42 / Uk 3 - 9 / US 6 - 10



PINK FLUO 121023-641
[2nd lace color: purple]



KOBALT 121025-622
[2nd lace color: white]



AIRPLAY XII

AIRPLAY XII

COMMENTS:

[Empty dashed box for comments]

COMMENTS:

[Empty dashed box for comments]



WHITE/BLACK 111201-00

POSE 111201-41
PINK/NAVY

- 111201-41: Soft Italian patent leather, neoprene sequins
- 111201-00: Soft Italian Nappa leather, patent, neoprene sequins
- Polyester laces for luxurious look and feel
- Waterproof Sock System with breathable membrane
- Comfortable and breathable ARNEFLEX® insert sole, memory foam covered with cow leather and heel support with recycled cork and heel support with recycled cork
- Airplay VI outsole in TR and light TR, DF6



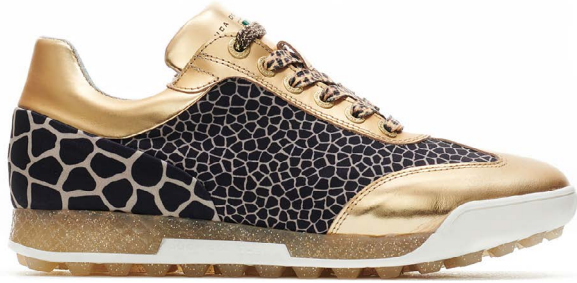
Sizes EU 36 - 42 / Uk 3 - 9 / US 6 - 10



AIRPLAY VI

COMMENTS:

[Empty dashed-line box for comments]

**MARQUESSA 110301-60****ANIMAL/GOLD**

[2nd lace color:dark brown]

- Soft Italian gold Nappa leather, neoprene animal print
- Polyester laces for a sportive look and feel
- Waterproof Sock System with On Steam recyclable microfiber
- Duca Cor Linza MTP 2.5mm Aqua stop lining
- Comfortable and breathable ARNEFLEX® insert sole, memory foam covered with cow leather and heel support with recycled cork
- Airplay VII outsole in TR with gold “stars” in the nubs, DF5



Sizes EU 36 - 42 / Uk 3 - 9 / US 6 - 10

COMMENTS:**ESTI 121016-122****NAVY**

[2nd lace color: white]

- Soft Italian Nappa leather
- Polyester laces for a sportive look and feel
- Comfortable and breathable ARNEFLEX® insert sole, memory foam covered with On Steam recyclable microfiber and heel support with recycled cork
- Airplay VIII outsole in high quality TR, DF10



Sizes EU 36 - 42 / Uk 3 - 9 / US 6 - 10

COMMENTS:

WHITE/RED 110701-00

[2nd lace color:white]

**AIRPLAY VIII**



FESTIVA 121017-151

YELLOW

[2nd lace color: yellow]

- Soft recyclable microfiber
- Polyester laces for a sportive look and feel
- Soft cow leather lining
- Duca Cor Linza MTP 2.5mm Aqua stop lining
- Comfortable and breathable ARNEFLEX® insert sole, memory foam covered with On Steam recyclable microfiber and heel support with recycled cork
- Elegant comfort last
- Strobel construction
- Airplay I in high quality TR, DF8



Sizes EU 36 - 42 / Uk 3 - 9 / US 6 - 10



RED 121018-142
[2nd lace color: red]



FESTIVA 120191-01

WHITE

[2nd lace color: light blue]

- Soft cow leather
- Wax laces for luxurious look and feel
- Soft cow leather lining
- Duca Cor Linza MTP 2.5mm Aqua stop lining
- Comfortable and breathable ARNEFLEX® insert sole, memory foam covered with cow leather and heel support with recycled cork
- Elegant comfort last
- Strobel construction
- Airplay I in high quality TR, DF8



Sizes EU 36 - 42 / Uk 3 - 9 / US 6 - 10



BLACK 111401-09
[2nd lace color: black]



NAVY 111401-22
[2nd lace color: navy]



AIRPLAY I

COMMENTS:

[Empty dashed box for comments]

COMMENTS:

[Empty dashed box for comments]



AIRPLAY III OUTSOLE

- Original Classic DDC sole
- TPU with highest abrasion resistance
- Lightweight TPU function sole designed with a comfort last to guarantee flexible wearing comfort
- Lateral stabilizers and 5mm cone-shaped nubs to provide traction and stability
- Heightened heel guaranteeing perfect stance
- Duca last for this sole unit: DF1



AIRPLAY VI OUTSOLE

- Fashionable design with trendsetting qualities
- TR functional sole combines function and fit - perfect for on and off the course
- 5mm cone-shaped nubs across complete outsole generates progressive stability during swing to ensure optimal grip
- Lightweight TR and cushioning across sole area
- Integrated bumper (front) protection
- Heightened heel guaranteeing perfect stance
- Duca last for this sole unit: DF6



AIRPLAY VII OUTSOLE

- DDC outsole for the fashion-conscious golfer
- First golf sole ever with silver/gold "stars" in the nubs
- TR function sole designed with a comfort last to guarantee flexible wearing comfort
- Integrated bumper (front) protection
- High quality TR
- Duca last for this sole unit: DF5



AIRPLAY VIII OUTSOLE

- Fashionable design with trendsetting qualities
- TR functional sole combines function and fit - perfect for on and off the course
- 5mm square-shaped nubs across complete outsole generates progressive stability during swing to ensure optimal grip
- Duca last for this sole unit: DF10



AIRPLAY XI OUTSOLE

- Fashionable design with trendsetting qualities
- TR functional spikeless sole combines function and fit - perfect for on and off the course
- 5mm square-shaped nubs across complete outsole generates progressive stability during swing to ensure optimal grip
- Lightweight and cushioning across sole area
- Heightened heel guaranteeing perfect stance
- Leather welt decoration - outsole
- Shank integrated in sole for better support
- Duca last for this sole unit: DF6



A6 SPIKE OUTSOLE

- Duca's unique spike development
- Advanced technology for the most demanding golfer
- Fashionable design with trendsetting qualities
- TPU outsole with EVA wedge
- Fast lock system 3.0 receptacle from Pridesport
- PULSAR CLEAT FTS 3 soft spikes
- EVA midsole for lightweight, durable shock absorption
- Special spike placement ensuring optimum traction during the downswing and reducing uncontrolled pivoting
- Perfect roll-off comfort
- 5mm traction nubs for added stability
- Duca last for this sole unit: DF6



AIRPLAY IX OUTSOLE

- Fashionable design with trendsetting qualities
- TR functional sole combines function and fit - perfect for on and off the course
- 5mm cone-shaped nubs across complete outsole generates progressive stability during swing to ensure optimal grip
- Lightweight and cushioning across sole area
- Integrated bumper (front) protection
- Heightened heel guaranteeing perfect stance
- Duca last for this sole unit: DF4

AIRPLAY I OUTSOLE

- A fashionable all-rounder, designed to be used on and off the course
- Lightweight TR function sole with star-shaped 2 – 5mm nubs for optimal grip
- Integrated DDC logo
- Sidewalls held in place by a seam channel
- High quality TR
- Duca last for this sole unit: DF8

AIRPLAY XII OUTSOLE (ECO GREEN)



- Innovative engineered high tech spikeless outsole
- Eco Green – a commitment to sustainability
- Recyclable B-Light Rubber Outsole technology created for on and off the course
- 2-Way-Twist triangle nubs positioned on the pivot point conically & cube-shaped nubs ensure optimal grip, traction and stability
- Bi-Color outsole composition
- Heightened heel guaranteeing perfect stance
- Duca last for this sole unit: DF4



AIRPLAY IV OUTSOLE (ECO GREEN)



- Latest innovative spikeless outsole development
- Eco Green – a commitment to sustainability
- Recyclable TPU spikeless outsole combines function and fit perfect for on and off the course
- Lightweight outsole with integrated EVA cushioning system
- Bi-Color outsole composition
- Functional shaped nubs across complete outsole generate progressive stability during the swing to ensure optimal grip
- Heightened heel guaranteeing perfect stance
- Based on comfort Last – by Fioretti to promise an excellent fit
- Duca last for this sole unit: DF1

DUCA FITTING SYSTEM

- DF1 – middle
- DF3 – middle
- DF4 – middle
- DF5 – middle
- DF6 – middle / wide
- DF8 – wide
- DF10 – middle / wide





*Italian Design
Made in Europe*

EYELETS BY SOLINI © - NO RUST WARRANTY

SOFT ITALIAN LEATHER -
NAPPA & MICROFIBER PU

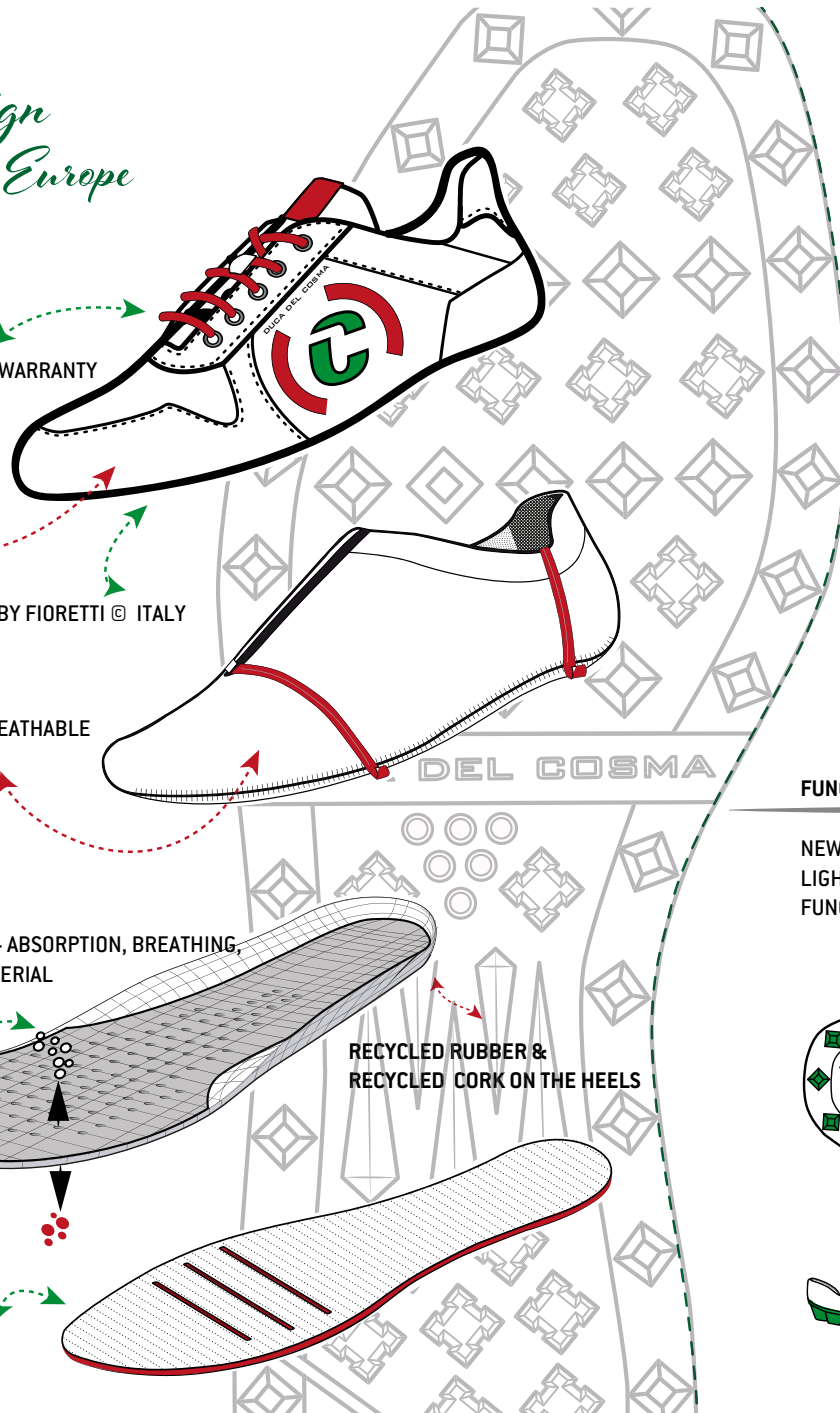
COMFORT LAST - BY FIORETTI © ITALY

MEMBRANE - WATERPROOF & BREATHABLE
MADE IN EUROPE

ARNEFLEX © ON STEAM INSOLE - ABSORPTION, BREATHING,
HIGH-DENSITY FOAM, ANTI - BACTERIAL

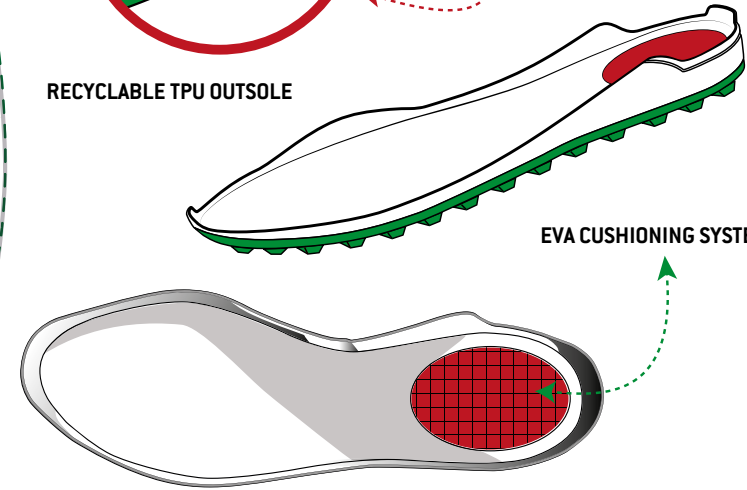
RECYCLED RUBBER &
RECYCLED CORK ON THE HEELS

HIGH TECH INSOLE



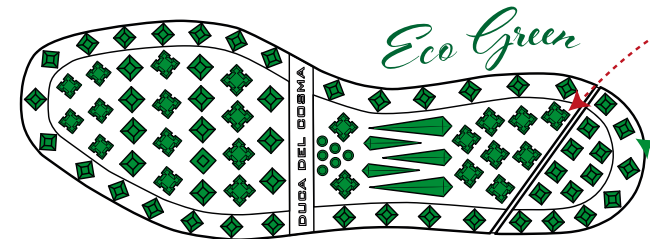
RECYCLABLE TPU OUTSOLE

EVA CUSHIONING SYSTEM



FUNCTIONAL SPIKELESS OUTSOLE „AIRPLAY 4“ - ECO GREEN

NEW FASHIONABLE OUTSOLE DESIGN WITH ADVANCED TECHNOLOGY
LIGHTWEIGHT, RECYCLABLE TPU OUTSOLE WITH EVA CUSHIONING SYSTEM
FUNCTIONAL NUBS ACROSS COMPLETE OUTSOLE ENSURE OPTIMAL GRIP





*Italian Design
Made in Europe*

EYELETS BY SOLINI © - NO RUST WARRANTY

SOFT ITALIAN LEATHER -
NAPPA & MICROFIBER PU

COMFORT LAST - BY FIORETTI © ITALY

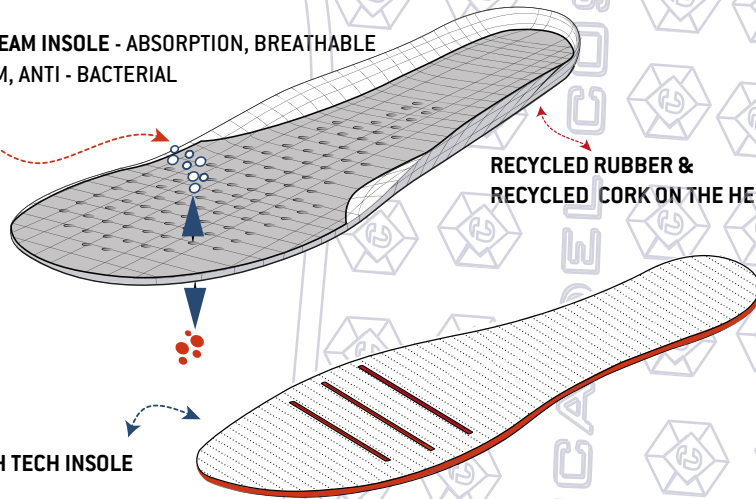
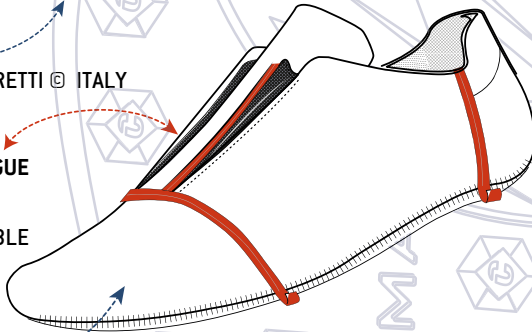
WATER TONGUE

MEMBRANE - WATERPROOF & BREATHABLE
MADE IN EUROPE

ARNEFLEX © ON STEAM INSOLE - ABSORPTION, BREATHABLE
HIGH-DENSITY FOAM, ANTI - BACTERIAL

RECYCLED RUBBER &
RECYCLED CORK ON THE HEELS

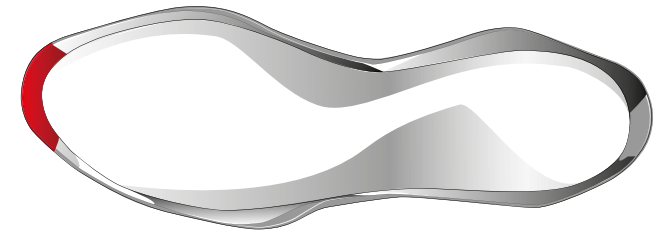
HIGH TECH INSOLE



BI-COLOR, ECO RECYCLABLE
B - LIGHT ECO RUBBER OUTSOLE



**AIRPLAY 12
ECO GREEN**



FUNCTIONAL SPIKELESS OUTSOLE „AIRPLAY 12“ - ECO GREEN

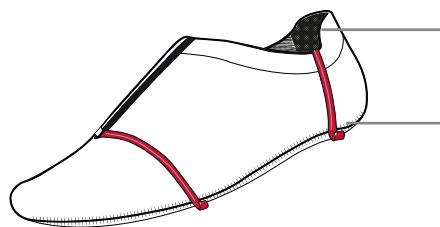
BI-COLOR, ECO RECYCLABLE B-LIGHT RUBBER OUTSOLE
NEW FASHIONABLE OUTSOLE DESIGN WITH ADVANCED TECHNOLOGY
2-WAY-TWIST TRIANGLE NUBS POSITIONED ON THE PIVOT POINT
CONICALLY & CUBE SHAPED FUNCTIONAL NUBS ENSURE OPTIMAL GRIP



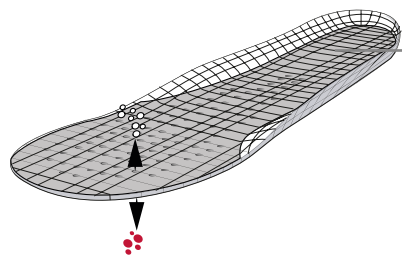
PRODUCT TECHNOLOGY SHOES



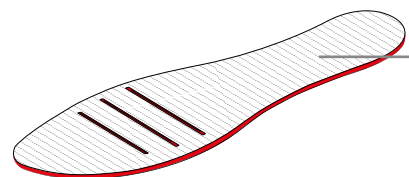
- Special comfort last
- Elegant, soft and functional lining
- Soft nappa Leather and other high quality materials



- Waterproof and breathable membrane system
Duca Cor Linza MTP 2.5mm Aquastop lining
Waterproof sock system
- Seam taping

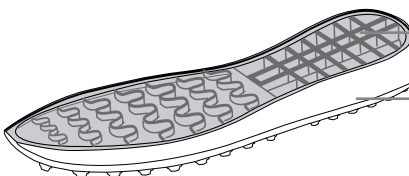


- ARNEFLEX® high density lightweight foam Insert sole:
- 100% Recyclable, breathable and anti-bacterial
Ergonomic, comfortable and removeable,
long-lasting comfort, breathability, and shock
absorption. Made from recycled rubber, covered
with On Steam recyclable microfiber



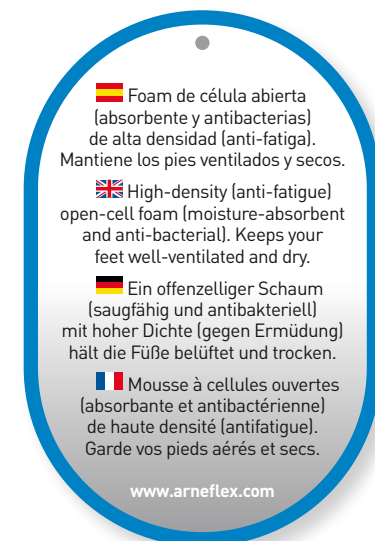
- High quality insole

- TR functional outsole combines function and fit -
perfect for on and off the course



- Lightweight and cushioning across sole area
- 5mm cone-shaped nubs across complete outsole
generates progressive stability during swing to ensure
optimal grip

INSERT SOLE TECHNOLOGY





Breathable
Waterproof leather and Duca Cor Linza MTP 2.5mm Aqua stop lining with taped seams, waterproof sock system for best comfort

Italian Design
Handcrafted, fashionable design for golfers perfect on and off the course

Real Leather
Soft nappa leather

Recyclable and recycled materials

Textile
Breathable and fully recyclable

Microfiber leather
Breathable, water resistant, high color retention and fully recyclable

ARNEFLEX®
Removable Insert sole: breathable, comfortable, anti-bacterial, high density lightweight foam made from recycled rubber

Keep Warm System
Thermal lining

Comfort Last
Excellent function and fit

Airplay III Outsole
Lightweight TPU functional sole combines function and fit perfect for on and off the course

DUCA DEL COSMA HEAD OFFICE

Duca del Cosma B.V.
De Corridor 27
3621 ZA Breukelen
The Netherlands
Tel. + 31 (0) 85 250 00 10
info@ducadelcosma.com
www.ducadelcosma.com

DUCA DEL COSMA USA

Duca Del Cosma LLC
Crystal Cove Commons, Suite 415
1201 US Highway 1
North Palm Beach
Florida 33408 USA
Tel. + 1 888 202 6066
info@ducadelcosma.com
www.ducadelcosma.us

DUCA DEL COSMA UNITED KINGDOM AND IRELAND

Duca del Cosma Ltd
Acorn House, Oak Farm
Hampton Lane
Catherine-de-Barnes
Solihull
West Midlands B92 0JB
United Kingdom
Tel: + 44 (0) 800 193 3822
enquiries@ducadelcosma.co.uk
www.ducadelcosma.co.uk

DUCA DEL COSMA SOUTH AFRICA

Duca del Cosma PTY
40 Gold Street, Northgate Estate
Brooklyn
7435 Cape Town
South Africa
Tel: + 27 (21) 506 6900
info@ducadelcosma.co.za
www.ducadelcosma.co.za

DUCA DEL COSMA DISTRIBUTED IN:

Austria, Belgium, Bulgaria, Canada, China, Czech Republic, Denmark, Estonia, Finland, France, Germany, Greece, Hong Kong, Iceland, Ireland, Italy, Japan, Kenya, Latvia, Lithuania, Malaysia, Mauritius, Namibia, New Zealand, Norway, Poland, Portugal, Russia, Singapore, South Africa, South Korea, Spain, Sweden, Switzerland, The Netherlands, United Kingdom, USA, Vietnam



© 2020 Duca del Cosma



E & OE. Features subject to change. Illustrations and features described may differ from actual models. Actual colors may differ from print colours.



DUCA DEL COSMA

ITALIAN GOLF EVOLUTION



WWW.DUCADEL COSMA.COM